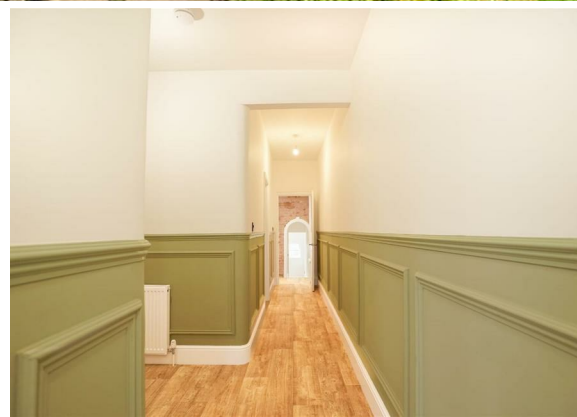
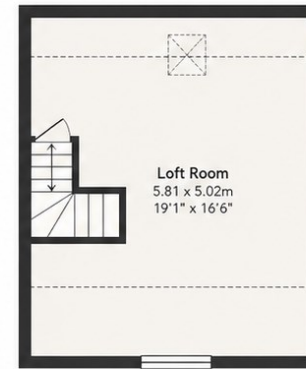
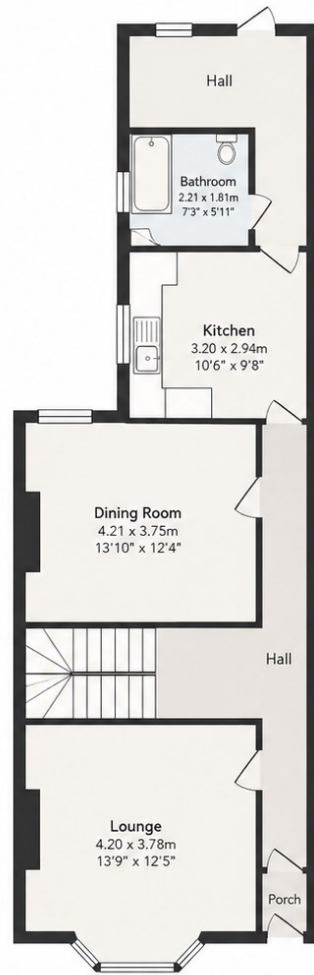




4 Bed
House
located in

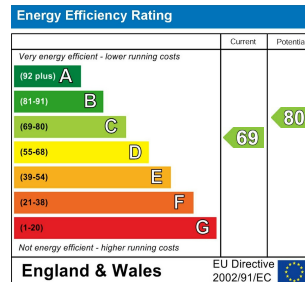
£1,650 Per month





Approx. Gross Internal Area
133.6 m² / 1,438 ft²

This floor plan is for illustrative purposes only and should be used as a general guide. All measurements are approximate and not to scale.



DIRECTIONS

CONTACT

14 Withambrook Park
Grantham
NG31 9ST

E: info@smartstreetproperty.com
T: 01476 247107



SMART STREET
THE PROPERTY PEOPLE